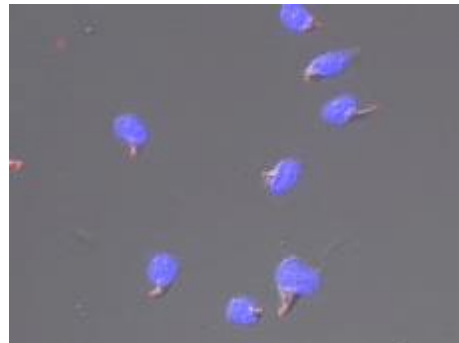


SUMMARY

shipped at RT; store at RT

For research use only



Product overview

MoBiTec ImmunoSelect adhesion slides are developed for microscopical use, where precious and only poorly available cellular material should be efficiently immobilized. In contrast to commonly coated slides the ImmunoSelect adhesion slides stop cell loss even at harsh incubation procedures. The ImmunoSelect adhesion surface allows a fast and highly efficient immobilization of the cells and helps to reduce cellular material and reagents. The extremely fast binding of the cellular material to the glass surface saves time consuming centrifugation and drying procedures.

Polarised human CD34+ hematopoietic cells, absorbed to ImmunoSelect® Adhesion Slides. DIC and immunohistological staining anti Flotillin (red), and DNA (DAPI, blue) J. Beckmann, Institute for Trans-plantation Diagnostics at the University of Düsseldorf, Germany

Principle

The new adhesive coating of the ImmunoSelect® adhesion slides with a Square Linque® surface combines different binding principles to natural surface structures of cells and tissues and anchored them securely to the glass surface. Due to this procedure the cells do not lose their antigenicity or ability to function.

Cell-Binding

For an optimal adhesive immobilization of the cells to the surface of the adhesion slides the cell suspension should be free of culture medium and proteins, because media components could interact with the adhesive coat and reduce cell binding. Cells or tissues should therefore be washed and then dropped onto the slide in an isotonic buffer (eg. PBS) solution. The immobilization of the cells begins immediately after contact to the glass surface. Drying of the samples is therefore not necessary any more. The cellular material can then be fixated with all common fixatives. For elongated cell-cultivation the buffer can be exchanged against appropriate culture medium after cell adhesion. Recent findings did not show any preferential cell type binding or loss in heterogenous cellular material.

Cell Amount

Stable immobilization of the cells to the glass surface, already at intensive washing and denaturation procedures tests can be performed with as few as several hundred cells.

Cell Types

All kinds of cells can be tested:

- All blood cells such as lymphocytes, monocytes, granulocytes, thrombocytes and erythrocytes
- Cells from bone marrow, effusion, liquor, bronchoalveolar lavage and cell suspension of lymph nodes and tumours
- Cell lines
- Artificial tissue
- Tissue sections and preparations

Cultivation of Cells on Adhesion Slides

For elongated cultivation of living cells the slides can be heat or alcohol sterilized without loss of binding capacity. Recent tests have shown, that the cultivation on adhesion slides is not compatible to all cell types. For actual informations please contact us.

Application of Adhesion Slides

- Immunofluorescence methods or other comparable methods*
- Immunoenzymatic tests (Peroxidase, Alkaline Phosphatase)
- Histological staining techniques eg. Pappenheim
- Intracellular antigen evidencing
- Molecular biological tests, eg. FISH or the detection of specific DNA modifications.

Compatibility with Staining Techniques

- The adhesion slides are tested for several fluorescence dyes:
- Fluorescein derivatives, eg. FITC
- Rhodamine derivatives, eg. TRITC, Texas Red
- Cy3 and Cy5
- Phycobilliproteins, eg. PE
- DAPI
- Hoechst 33358 and 3334

References

1. Thomas JP, Lautermann J, Seiler F, Thomale J; The different ototoxic potential of Cis- and Carboplatin is correlated to the accumulation of platinum-DNA adducts in specific cells of the inner ear. Submitted
2. Bracker T, Giebel B, Klein-Hitpass L, Moritz T, Thomale J; Regulation and function of DNA repair in human hematopoetic cells submitted

ImmunoSelect Adhesion Slides

Product Information Sheet
SQ-IS-10XXX



Order Information, Shipping and Storage

Order#	Product	Quantity
SQ-IS-10050	ImmunoSelect Adhesion Slides	50
SQ-IS-10100	ImmunoSelect Adhesion Slides	100
shipped at RT; store at RT		

Contact and Support

MoBiTec GmbH ● Lotzestrasse 22a ● D-37083 Goettingen ● Germany

Customer Service – General inquiries & orders

phone: +49 (0)551 707 22 0
fax: +49 (0)551 707 22 22
e-mail: order@mobitec.com

Technical Service – Product information

phone: +49 (0)551 707 22 70
fax: +49 (0)551 707 22 77
e-mail: info@mobitec.com

MoBiTec in your area: Find your local distributor at www.mobitec.com